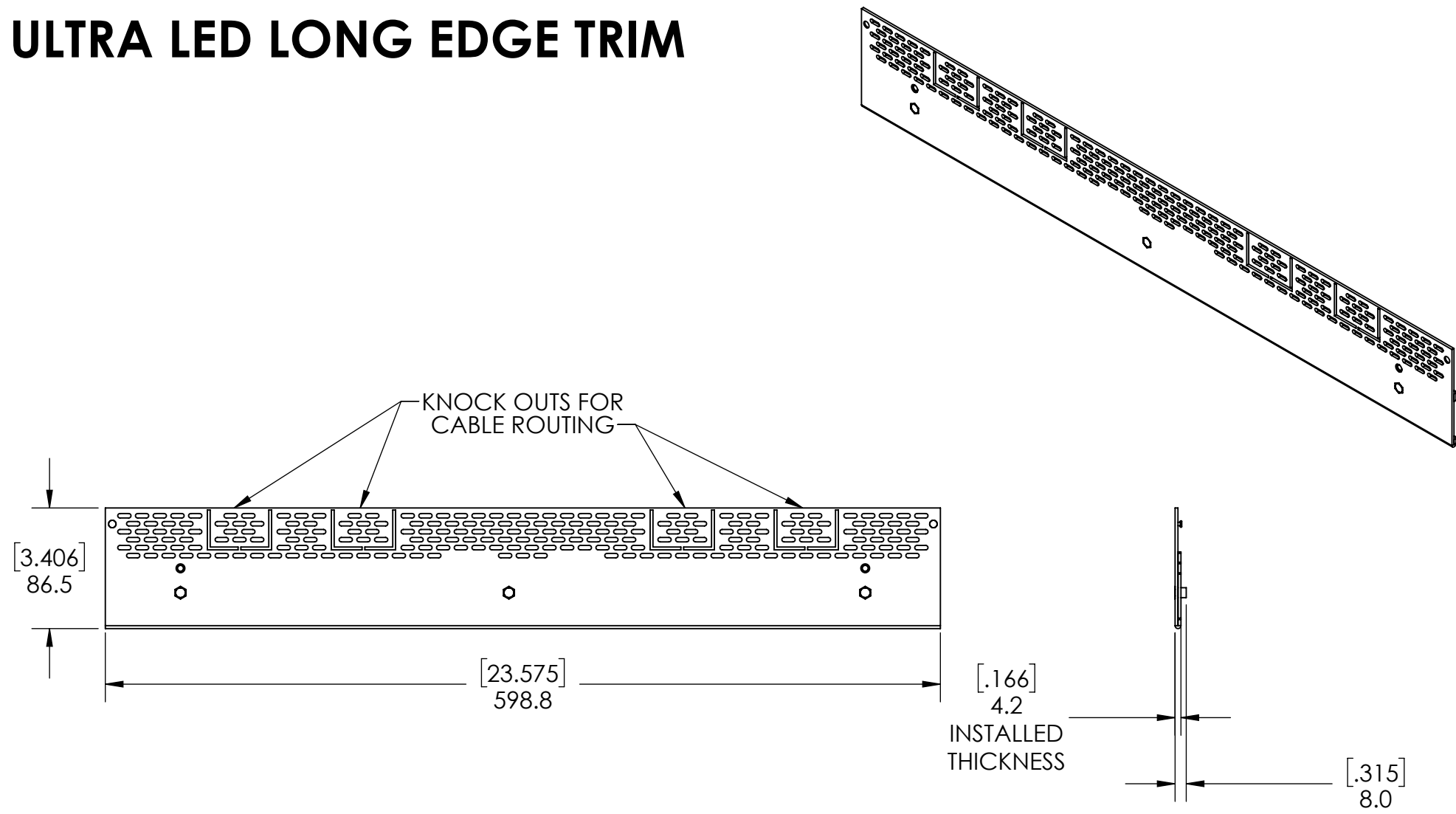
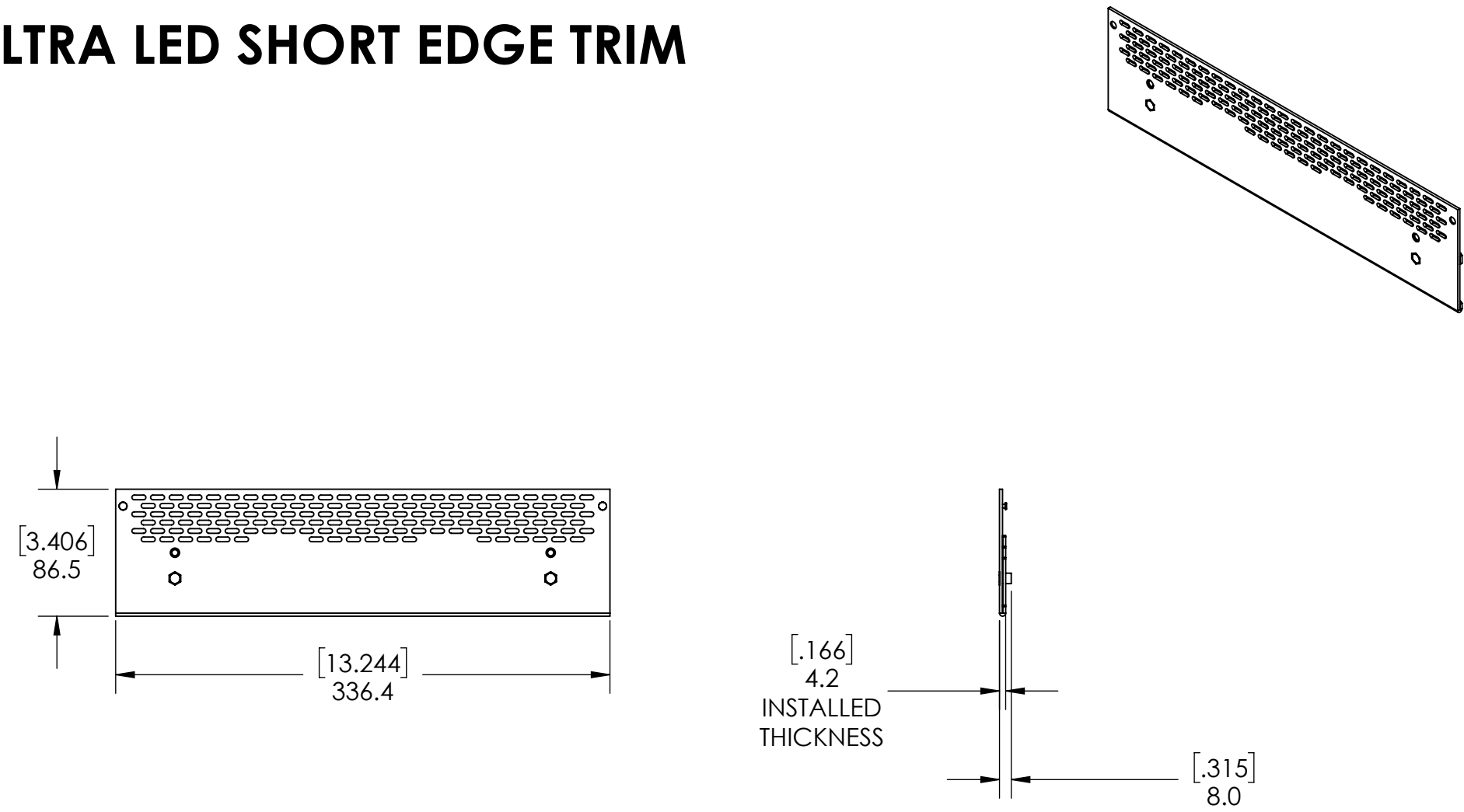


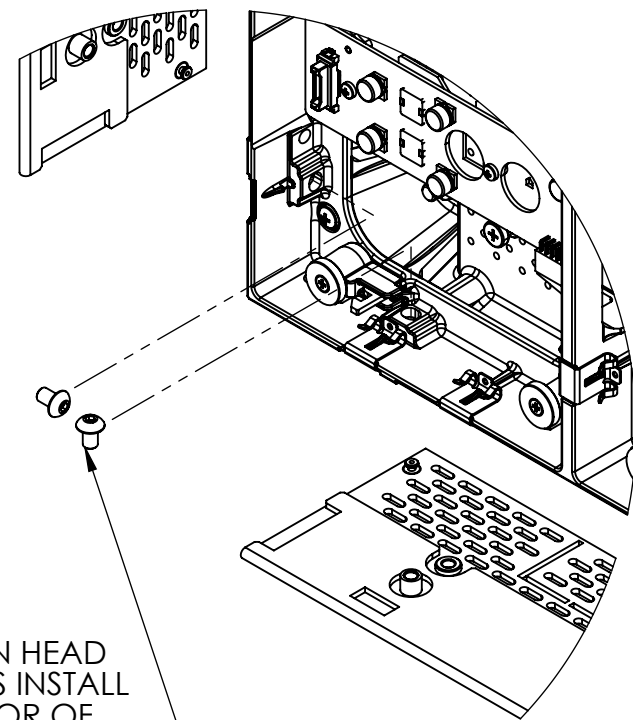
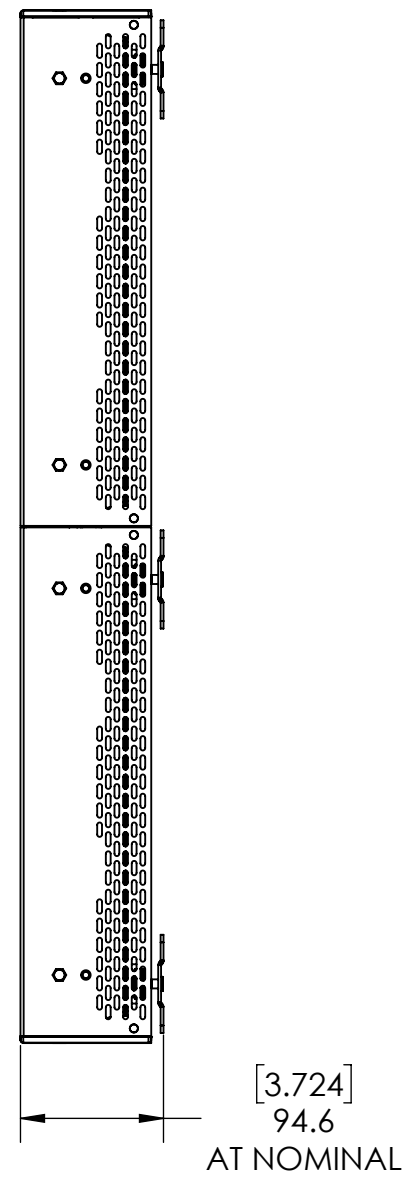
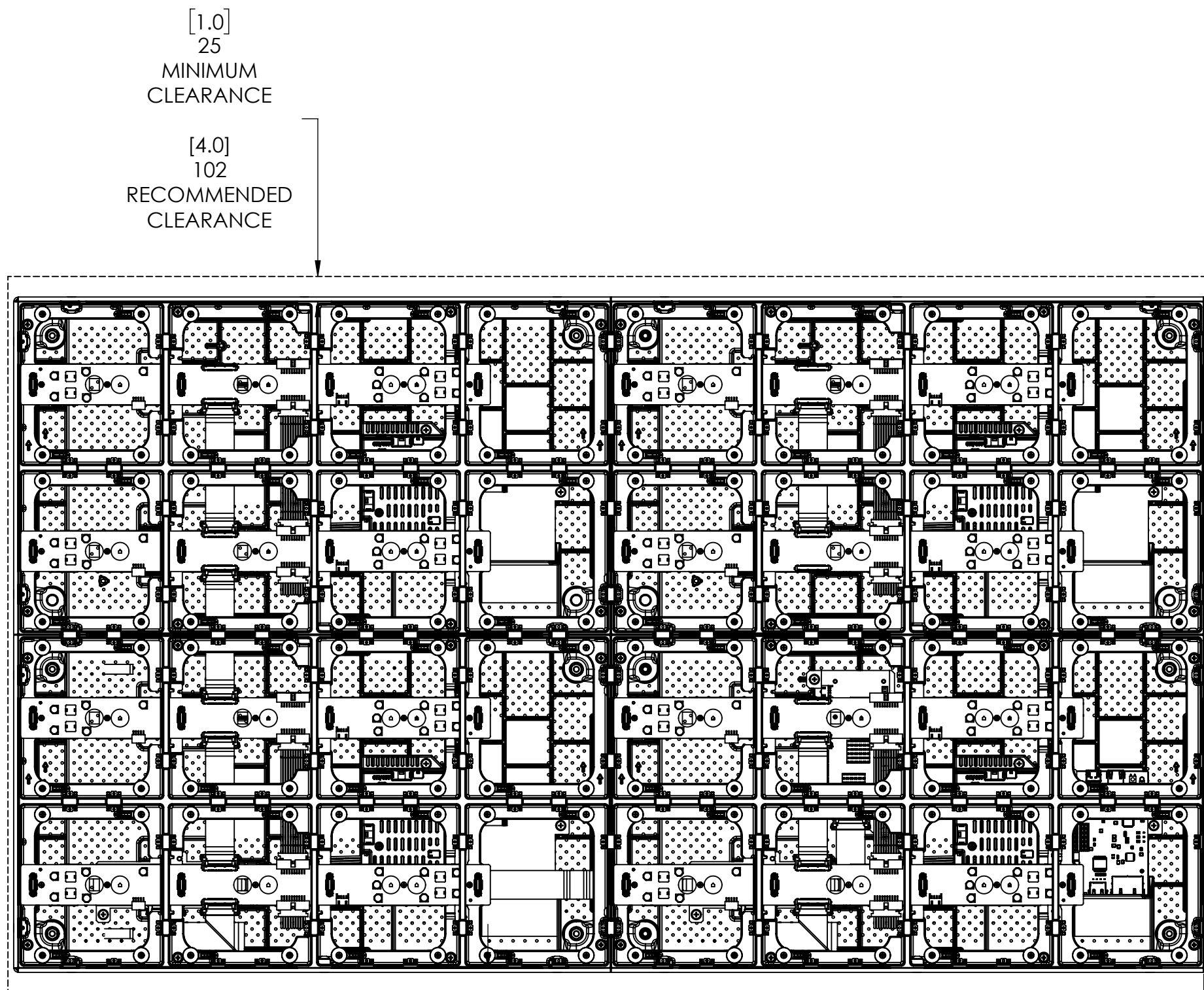
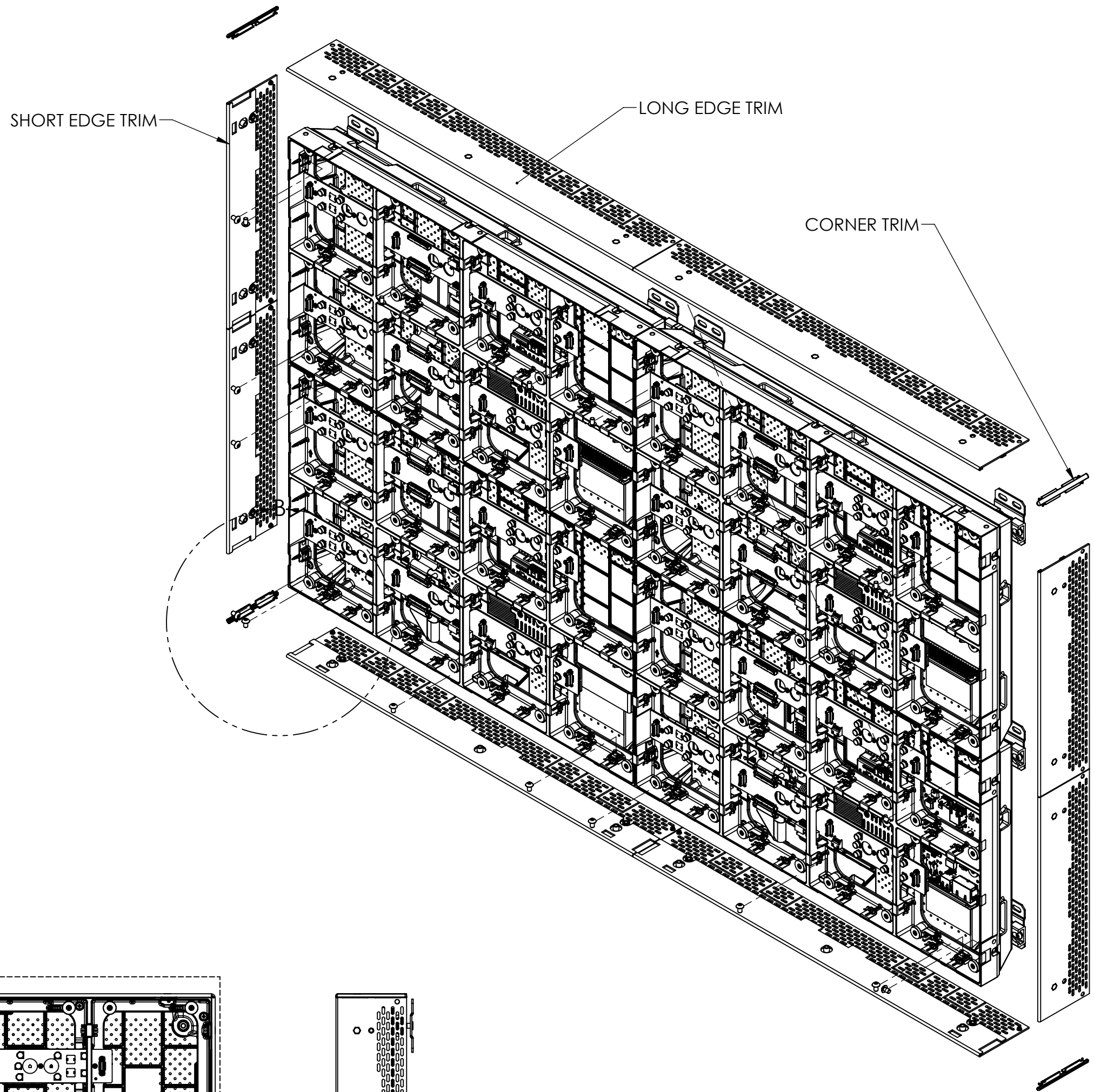
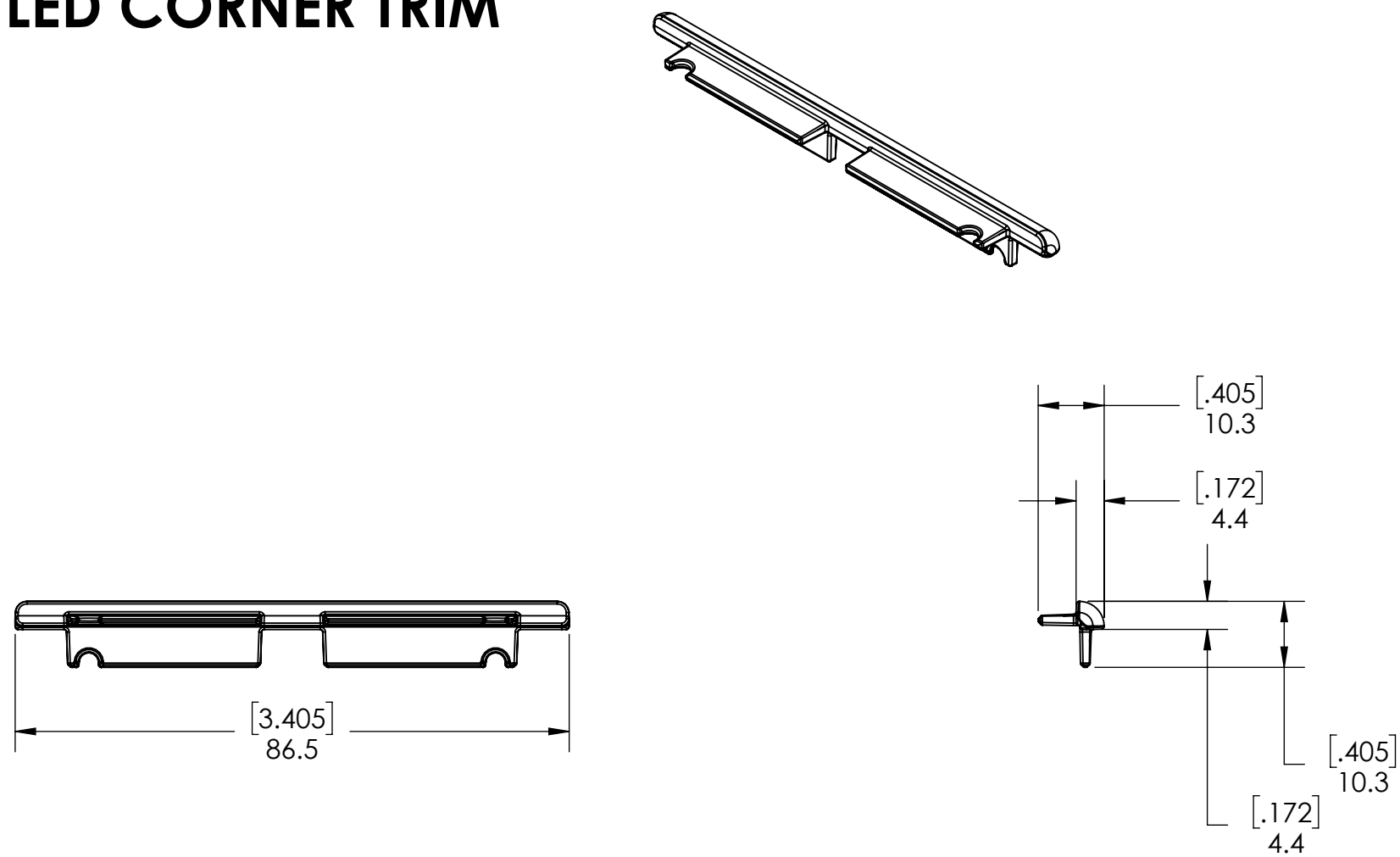
ULTRA LED LONG EDGE TRIM



ULTRA LED SHORT EDGE TRIM



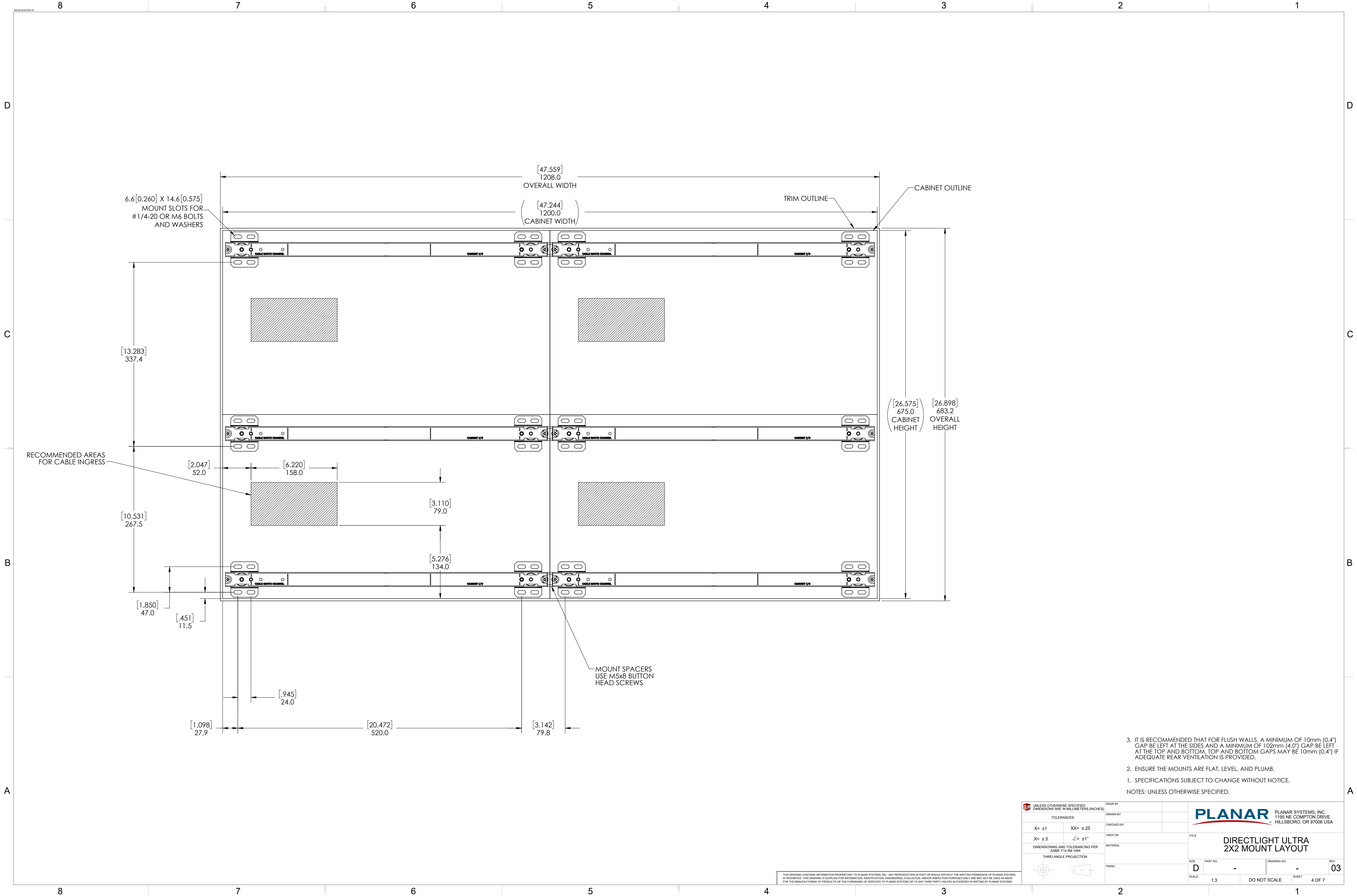
ULTRA LED CORNER TRIM



DETAIL B
SCALE 2 : 5

2. TRIM IS NECESSARY FOR ALL INSTALLATIONS FOR CORRECT MODULE ALIGNMENT AND SHOULD BE INSTALLED PRIOR TO MODULES.
1. SPECIFICATIONS SUBJECT TO CHANGE WITHOUT NOTICE.
- NOTES: UNLESS OTHERWISE SPECIFIED.

| | | | |
|---|----------|--|---------------|
| UNLESS OTHERWISE SPECIFIED: DIMENSIONS ARE IN MILLIMETERS (INCHES) | | ENGR BY | |
| TOLERANCES: | | DRAWN BY | |
| X= ±1 | XX= ±.25 | CHECKED BY | |
| X= ±.5 | ∠= ±1° | USED ON | |
| DIMENSIONING AND TOLERANCING PER ASME Y14.5M-1994 | | MATERIAL | |
| THIRD ANGLE PROJECTION | | FINISH | |
| SIZE D | | PART NO. - | DRAWING NO. - |
| SCALE 1:4 | | DO NOT SCALE | SHEET 3 OF 7 |
| THIS DRAWING CONTAINS INFORMATION PROPRIETARY TO PLANAR SYSTEMS, INC. ANY REPRODUCTION IN PART OR WHOLE WITHOUT THE WRITTEN PERMISSION OF PLANAR SYSTEMS IS PROHIBITED. THIS DRAWING IS SUPPLIED FOR INFORMATION, IDENTIFICATION, ENGINEERING, EVALUATION, AND/OR INSPECTION PURPOSES ONLY AND MAY NOT BE USED AS BASIS FOR THE MANUFACTURING OF PRODUCTS OR THE FURNISHING OF SERVICES TO PLANAR SYSTEMS OR TO ANY THIRD PARTY UNLESS AUTHORIZED IN WRITING BY PLANAR SYSTEMS. | | PLANAR SYSTEMS, INC. 1195 NE COMPTON DRIVE HILLSBORO, OR 97006 USA | |
| TITLE DIRECTLIGHT ULTRA TRIM | | REV 03 | |



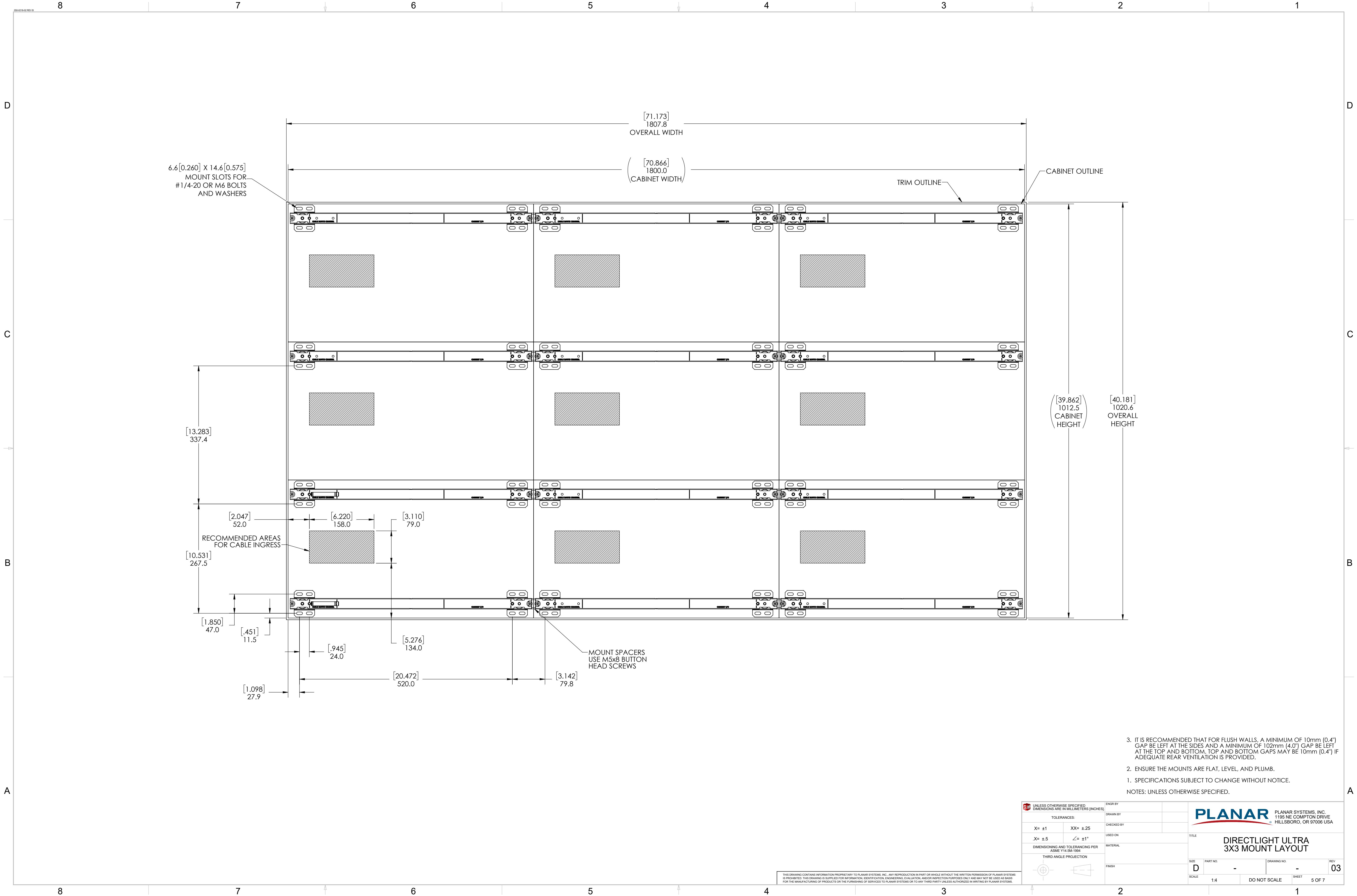
3. IT IS RECOMMENDED THAT FOR FLUSH WALLS, A MINIMUM OF 10mm (0.4") GAP BE LEFT AT THE SIDES AND A MINIMUM OF 102mm (4.0") GAP BE LEFT AT THE TOP AND BOTTOM. TOP AND BOTTOM GAPS MAY BE 10mm (0.4") IF ADEQUATE REAR VENTILATION IS PROVIDED.

2. ENSURE THE MOUNTS ARE FLAT, LEVEL, AND PLUMB.

1. SPECIFICATIONS SUBJECT TO CHANGE WITHOUT NOTICE.

NOTES: UNLESS OTHERWISE SPECIFIED.

| | | | |
|---|----------|--|--------------|
| UNLESS OTHERWISE SPECIFIED: DIMENSIONS ARE IN MILLIMETERS (INCHES) | | ENGR BY | |
| TOLERANCES: | | DRAWN BY | |
| X= ±1 | XX= ±.25 | CHECKED BY | |
| .X= ±.5 | ∠= ±1° | USED ON | |
| DIMENSIONING AND TOLERANCING PER ASME Y14.5M-1994 | | MATERIAL | |
| THIRD ANGLE PROJECTION | | FINISH | |
| | | | |
| THIS DRAWING CONTAINS INFORMATION PROPRIETARY TO PLANAR SYSTEMS, INC. ANY REPRODUCTION IN PART OR WHOLE WITHOUT THE WRITTEN PERMISSION OF PLANAR SYSTEMS IS PROHIBITED. THIS DRAWING IS SUPPLIED FOR INFORMATION, IDENTIFICATION, ENGINEERING, EVALUATION, AND/OR INSPECTION PURPOSES ONLY AND MAY NOT BE USED AS BASIS FOR THE MANUFACTURING OF PRODUCTS OR THE FURNISHING OF SERVICES TO PLANAR SYSTEMS OR TO ANY THIRD PARTY UNLESS AUTHORIZED IN WRITING BY PLANAR SYSTEMS. | | PLANAR PLANAR SYSTEMS, INC. 1195 NE COMPTON DRIVE HILLSBORO, OR 97006 USA | |
| TITLE | | DIRECTLIGHT ULTRA 2X2 MOUNT LAYOUT | |
| SIZE | PART NO. | DRAWING NO. | REV |
| D | - | - | 03 |
| SCALE | 1:3 | DO NOT SCALE | SHEET 4 OF 7 |



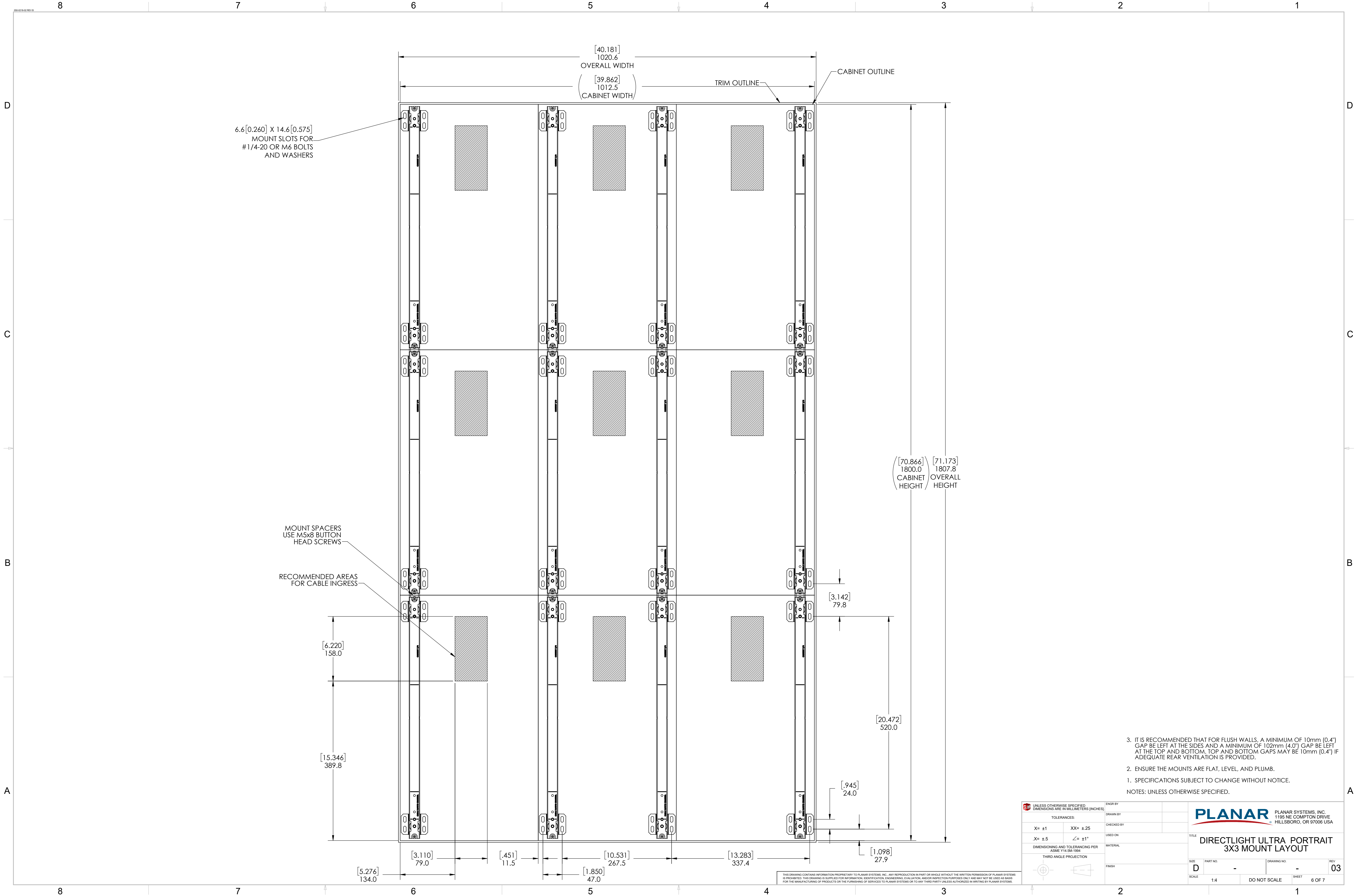
3. IT IS RECOMMENDED THAT FOR FLUSH WALLS, A MINIMUM OF 10mm (0.4") GAP BE LEFT AT THE SIDES AND A MINIMUM OF 102mm (4.0") GAP BE LEFT AT THE TOP AND BOTTOM. TOP AND BOTTOM GAPS MAY BE 10mm (0.4") IF ADEQUATE REAR VENTILATION IS PROVIDED.

2. ENSURE THE MOUNTS ARE FLAT, LEVEL, AND PLUMB.



1. SPECIFICATIONS SUBJECT TO CHANGE WITHOUT NOTICE.


NOTES: UNLESS OTHERWISE SPECIFIED.

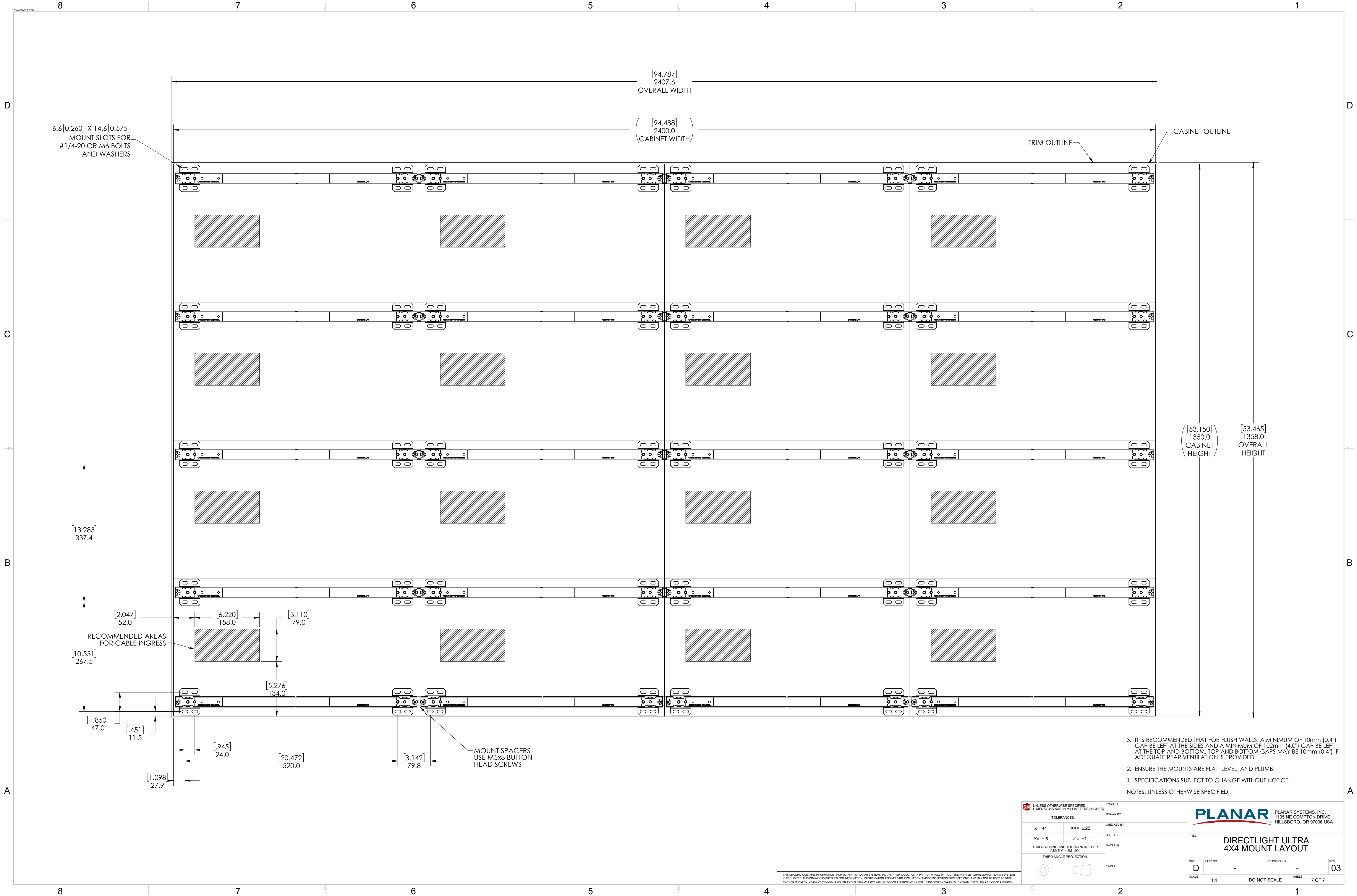
| | | | |
|---|----------|--|--------------|
| UNLESS OTHERWISE SPECIFIED, DIMENSIONS ARE IN MILLIMETERS (INCHES) | | ENG'D BY | |
| TOLERANCES: | | DRAWN BY | |
| X= ±1 | XX= ±.25 | CHECKED BY | |
| .X= ±.5 | ∠= ±1° | USED ON | |
| DIMENSIONING AND TOLERANCING PER ASME Y14.5M-1994 | | MATERIAL | |
| THIRD ANGLE PROJECTION | | FINISH | |
| THIS DRAWING CONTAINS INFORMATION PROPRIETARY TO PLANAR SYSTEMS, INC. ANY REPRODUCTION IN PART OR WHOLE WITHOUT THE WRITTEN PERMISSION OF PLANAR SYSTEMS IS PROHIBITED. THIS DRAWING IS SUPPLIED FOR INFORMATION, IDENTIFICATION, ENGINEERING, EVALUATION, AND/OR INSPECTION PURPOSES ONLY AND MAY NOT BE USED AS BASIS FOR THE MANUFACTURING OF PRODUCTS OR THE FURNISHING OF SERVICES TO PLANAR SYSTEMS OR TO ANY THIRD PARTY UNLESS AUTHORIZED IN WRITING BY PLANAR SYSTEMS. | | PLANAR SYSTEMS, INC. 1195 NE COMPTON DRIVE HILLSBORO, OR 97006 USA | |
| TITLE | | DIRECTLIGHT ULTRA 3X3 MOUNT LAYOUT | |
| SIZE | PART NO. | DRAWING NO. | REV |
| D | - | - | 03 |
| SCALE | 1:4 | DO NOT SCALE | SHEET 5 OF 7 |



3. IT IS RECOMMENDED THAT FOR FLUSH WALLS, A MINIMUM OF 10mm (0.4") GAP BE LEFT AT THE SIDES AND A MINIMUM OF 102mm (4.0") GAP BE LEFT AT THE TOP AND BOTTOM. TOP AND BOTTOM GAPS MAY BE 10mm (0.4") IF ADEQUATE REAR VENTILATION IS PROVIDED.
2. ENSURE THE MOUNTS ARE FLAT, LEVEL, AND PLUMB.
1. SPECIFICATIONS SUBJECT TO CHANGE WITHOUT NOTICE.
- NOTES: UNLESS OTHERWISE SPECIFIED.

| | | | |
|---|---------|------------|--|
| <div></div> UNLESS OTHERWISE SPECIFIED DIMENSIONS ARE IN MILLIMETERS (INCHES) | | ENGR BY | |
| TOLERANCES: | | DRAWN BY | |
| X= ±1 | XX= ±25 | CHECKED BY | |
| X= ±.5 | ∠= ±1° | USED ON | |
| DIMENSIONING AND TOLERANCING PER ASME Y14.5M-1994 | | MATERIAL | |
| THIRD ANGLE PROJECTION | | FINISH | |
| <div></div> | | | |

| | | | | | |
|--|--------------|------------------|-----------|--|--|
| <div></div> | | | | PLANAR SYSTEMS, INC. 1195 NE COMPTON DRIVE HILLSBORO, OR 97006 USA | |
| TITLE DIRECTLIGHT ULTRA PORTRAIT 3X3 MOUNT LAYOUT | | | | | |
| SIZE D | PART NO - | DRAWING NO. - | REV 03 | | |
| SCALE 1:4 | DO NOT SCALE | | SHEET | 6 OF 7 | |



3. IT IS RECOMMENDED THAT FOR FLUSH WALLS, A MINIMUM OF 10mm (0.4") GAP BE LEFT AT THE SIDES AND A MINIMUM OF 102mm (4.0") GAP BE LEFT AT THE TOP AND BOTTOM. TOP AND BOTTOM GAPS MAY BE 10mm (0.4") IF ADEQUATE REAR VENTILATION IS PROVIDED.
2. ENSURE THE MOUNTS ARE FLAT, LEVEL, AND PLUMB.
1. SPECIFICATIONS SUBJECT TO CHANGE WITHOUT NOTICE.
- NOTES: UNLESS OTHERWISE SPECIFIED.

| | | | |
|---|----------|---|--------------|
| UNLESS OTHERWISE SPECIFIED DIMENSIONS ARE IN MILLIMETERS (INCHES) | | ENG'D BY | |
| TOLERANCES: | | DRAWN BY | |
| X= ±1 | XX= ±.25 | CHECKED BY | |
| .X= ±.5 | ∠= ±1° | USED ON | |
| DIMENSIONING AND TOLERANCING PER ASME Y14.5M-1994 | | MATERIAL | |
| THIRD ANGLE PROJECTION | | FINISH | |
| THIS DRAWING CONTAINS INFORMATION PROPRIETARY TO PLANAR SYSTEMS, INC. ANY REPRODUCTION IN PART OR WHOLE WITHOUT THE WRITTEN PERMISSION OF PLANAR SYSTEMS IS PROHIBITED. THIS DRAWING IS SUPPLIED FOR INFORMATION, IDENTIFICATION, ENGINEERING, EVALUATION, AND/OR INSPECTION PURPOSES ONLY AND MAY NOT BE USED AS BASIS FOR THE MANUFACTURING OF PRODUCTS OR THE FURNISHING OF SERVICES TO PLANAR SYSTEMS OR TO ANY THIRD PARTY UNLESS AUTHORIZED IN WRITING BY PLANAR SYSTEMS. | | PLANAR PLANAR SYSTEMS, INC. 1195 NE COMPTON DRIVE HILLSBORO, OR 97006 USA | |
| TITLE | | DIRECTLIGHT ULTRA 4X4 MOUNT LAYOUT | |
| SIZE | PART NO. | DRAWING NO. | REV |
| D | - | - | 03 |
| SCALE | 1:4 | DO NOT SCALE | SHEET 7 OF 7 |